

SUBLIME MAIDEN'S LOVE

気高き少女の恋

KEN NAKAGAWA & DAISUKE ACHIWA

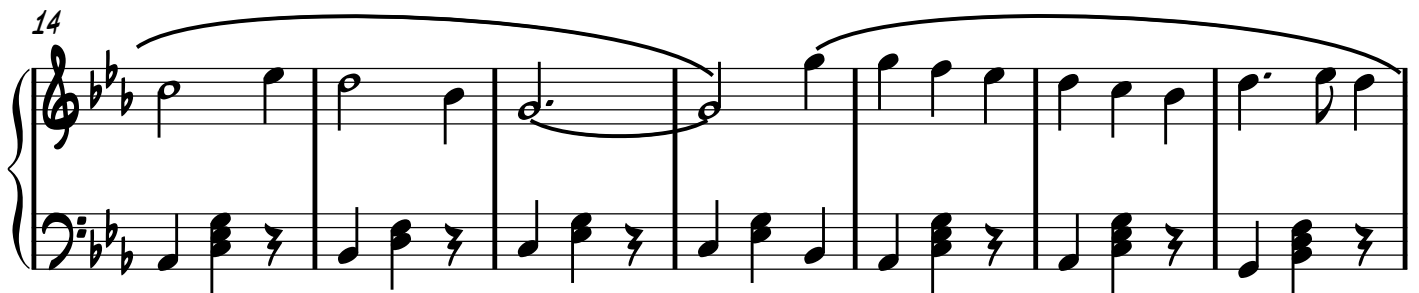
中河健&阿知波大輔

ARR. MARK ANDREWS

マーク アンドリューズ

LIVELY

FROM "MANA-KHEMIA 2" マナケミア2



ARRANGEMENT ONLY (C) 2010 MARK ANDREWS

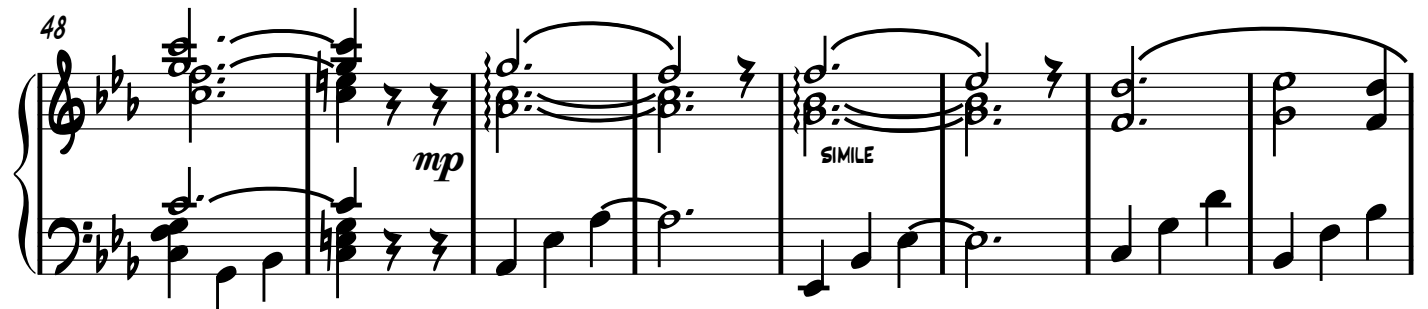
34



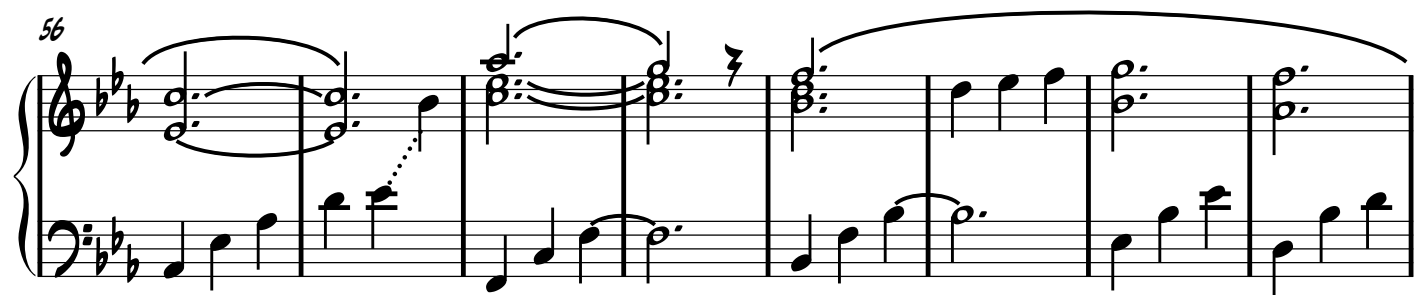
41



48



56



64



72

Measures 72-78: Treble clef, key signature of three flats (B-flat, E-flat, A-flat). Measure 72 starts with a whole rest and a fermata. Measures 73-78 feature a melody in the treble and a bass line in the bass. The melody consists of eighth and quarter notes, while the bass line features a steady eighth-note accompaniment.

79

Measures 79-85: Treble clef, key signature of three flats. Measure 79 begins with a double bar line and a key signature change to two flats (B-flat, E-flat). The melody continues with eighth and quarter notes, and the bass line maintains the eighth-note accompaniment.

86

Measures 86-92: Treble clef, key signature of two flats. Measure 86 starts with a double bar line. The melody includes a half note with a fermata in measure 87. Measures 88-92 show a more active melody with eighth and quarter notes, while the bass line continues with eighth notes.

93

Measures 93-96: Treble clef, key signature of two flats. Measures 93-96 feature a continuous eighth-note melody in the treble and a corresponding eighth-note bass line. The system concludes with a double bar line and a key signature change to one flat (B-flat, E-flat).

97

Measures 97-100: Treble clef, key signature of one flat. Measures 97-99 feature a melody in the treble with whole and half notes, and a bass line with eighth notes. Measure 100 ends with a double bar line and repeat dots.